

My Baker is Harry

In 1688 Harry Brot started a small bakery in Hamburg-Altona, Germany. Today Harry is the second largest bakery in Germany. Known for providing high quality name brand bread- and baked-goods to consumers, Harry is also referred in the food industry as being a competent and reliable partner. There are more than 300 different types of bread available in Germany and in no other country is more bread consumed. The standard of quality at Harry Brot is high-levelled and trend-setting for the industry and has received several awards from independent analysis organizations. Harry Brot has become the most famous and favored bread brand in Germany by retaining a group of highly motivated employees, that through continued training and education guarantee a high level of quality.



Harry Brot (Bread) GmbH operates the company's IT from their corporate headquarter in Schenefeld, Schleswig-Holstein, Germany. IBM mainframes with operating system z/VSE are the backbone of their IT architecture. All mainframe applications have been developed with the 4GL-language IDEAL. Heiner Kruse, Manager System Development: "Our production data is stored in DATACOM and we are a long-standing user of this database." At an early stage, Harry Brot enabled the end user departments to create their own reports. Mr. Kruse: "This was an important requirement to provide the utmost flexibility to the end users so that they could cope with their data. We already started in the mid 90s with the implementation of hardware- and software solutions to allow access to DATACOM for the end users."

This solution is based upon a graphical Windows application that allows users access to the DATACOM tables and the ability to create reports. Heiner Kruse: "We have been using this solution for more than 10 years although it was based on a very complex architecture that was not flexible at all." During the course of a VSE changeover this solution was put to the test again.

Dr. Emile Mokouabeka, System Development: " We had multiple criteria why we wanted to replace the old solution by a modern technology, The criteria were: too many components like gateway servers, 3270 emulations, proxy-servers were part of the game, connections to the mainframe could not be reused because no pooling was supported and we were forced to use a very complex security system although we only wanted to control the relationship between users and their tables. However the biggest shortcoming was the missing direct TCP/IP-connectivity and -capability to the mainframe. Quite often we were faced with complaints from our end users because the mainframe connections were unstable and not always automatically disconnected."

Harry Brot's relationship with B.O.S. was established during spring of 2008. Heiner Kruse: "We were looking for an alternative to our existing implementation. B.O.S. was recommended to us by the VSE Laboratory of IBM, Böblingen, Germany. We have contacted B.O.S. and invited them for a presentation. We have been very impressed by the flexibility the B.O.S. solutions could offer. We attended the 2008 User Conference of B.O.S. and when talking to customers we have been convinced to have a closer look at tcACCESS."

tcACCESS was installed in Spring 2008 and various

DATACOM tables were selected for a test. Michael Ludwig, Database Administrator, remembers: "tcACCESS uses a Windows-application to access the DATACOM Dictionary to import table definitions, element lists and other information relevant for the DATACOM access. The resulting objects can be used like relational tables. It is possible to create individual views for these tables as well as joins between tables. However the most interesting and important part for us was the easy integration into our existing infrastructure using TCP/IP and the fact that our end users did not have to change their familiar operation methods. Even better the access to the information with tcACCESS is real easy, fast and simple."

The end user departments create their reports using a Windows application. This application connects to the tcACCESS ODBC component to access the DATACOM databases. Michael Ludwig: "Nearly all of our end user departments use this service to create their own individual reports and statistics. tcACCESS checks that DATACOM key fields have been used as part of the selection criteria to ensure a fast and efficient access to DATACOM. With this feature tcACCESS helps us to save resources and it significantly cuts down the time required to create the report."

Nearly 100 users use tcACCESS to create their reports.

Dr. Emile Mokouabeka: "We are very happy with the tcACCESS solution. It is flexible, easy to use and transparent for our end users. We also use the tcACCESS internal security that suits our needs more than the complex old security system."

tcACCESS is also being used in another areas. The Tivoli Work Scheduler schedules tcACCESS batch applications that extract data from DATACOM and sends it to our OLAP-system (Online-Analytical-Processing). Dr. Mokouabeka: "We also have UNIX JAVA applications that use the tcACCESS JDBC component to access our DATACOM databases on the mainframe."

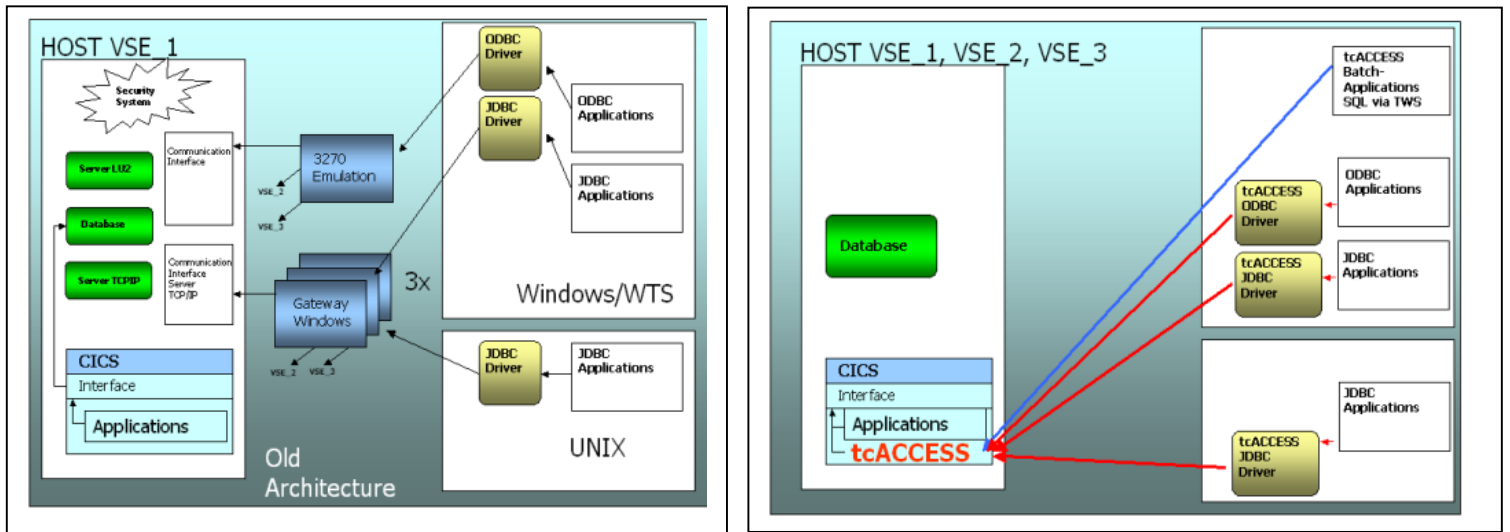
Heiner Kruse draws a conclusion: "tcACCESS has brought to us the flexibility that we expected. The cooperation with B.O.S. always has been and still is excellent. The B.O.S. support team is competent and reacts very fast. The direct link to B.O.S. is important to us. Both companies, Harry and B.O.S., follow the same principle:

Our quality standards are set on a high level."

Contact:
Heiner Kruse – Harry Brot
Manager System Development
Mail: heiner.kruse@harry.de

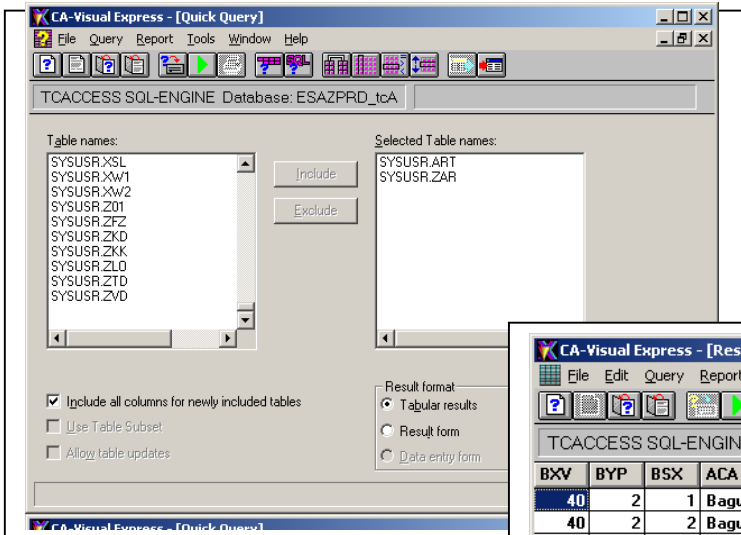
Peter M. Horbach
B.O.S. Software Service und Vertrieb GmbH
Mail: peter.horbach@bossoftware.de

Application Example: Harry Brot



The graph on the left represents the old architecture. Multiple software components and gateways were required to send a request to the mainframe using ODBC and JDBC. An IP connection to a VSE host was only possible using *one* IP-address via a gateway server. The normal requests to the mainframe were sent using the 3270 emulation.

tcACCESS supports direct TCP/IP based connections to the tcACCESS SQL-Engine on the mainframe. Additional hardware- or software-components are not required.



The end user uses a graphical Windows application to create a report. All tables defined in tcACCESS are displayed. The end user selects a table and the required columns that are relevant to his report. Selection criteria can also be specified.

tcACCESS automatically checks whether key fields have been specified for the selection criteria. If this is not the case the user is prompted to correct this. This processing type ensures that the DATACOM tables are processed efficiently and the user gets a fast and quick response.

The screenshot shows the 'CA-Visual Express - [Result Browser 1]' window displaying a table of data. The table has columns: BxV, BYP, BSX, ACA, DTW, and an unlabeled column. The data rows are as follows:

BxV	BYP	BSX	ACA	DTW	
40	2	1	Baguette z.FB 2 St		0
40	2	2	Baguette Broetchen z.FB 4 St		0
40	2	3	Broetchen z.FB 4 St		0
40	2	4	Baguette Broetchen z.FB 6 St		0
40	2	5	Baeckerbroetchen z.FB 8 St		0
40	2	6	Das Volle Korn Urtyp 1000g		0
40	2	7	Zwiebel Krustis z.FB 3 St		0
40	2	8	Koernerbroetchen z.FB 4 St		0
40	2	9	Gemischte Broetchen z.FB 8 St		0
40	2	10	Panelino z.FB 400g		0
40	2	11	Mini-Panelino z.FB 8 St		0
40	2	12	1688 Lueneburger 1250g		0
40	2	13	Weltmeisterbroetchen z.FB 3 St		0
40	2	14	Koerner Krustis z.FB 3 St		0
40	2	15	Meisterkruestchen z.FB 8 St		0
40	2	16	Mehrkornbroetchen z.FB 8 St		0
40	2	17	Sandwich Baggis 6 St		0
40	2	18	Sonnenkerbrot 1000g		0

44 row(s) have been read so far