

...where better products cost less

The BAUHAUS story starts 40 years ago. Long since the story has become a success story.

40 years ago looking for tools, building material, paint etc. meant visiting different stores to get the wanted materials. At the time when "Do it yourself" became trendy, BAUHAUS introduced a new idea in Germany. The concept: BAUHAUS presents oneself as the specialist for workshop, house and garden. Everything under one roof: for the do-it-yourselfer and for the professional.



The innovation of the BAUHAUS business idea always has been the combination of different specialist shops. Starting in 1960 customers looking for high-quality products found everything in one place: fast and convenient. And the idea had a future. More than 120 branches are now operating in Germany, following the same idea. As of today BAUHAUS is represented in several European countries with over 170 branches.

The data processing department of BAUHAUS is located at the Mannheim headquarter. IBM mainframes are being used for more than 30 years. VM/ESA and VSE/ESA 2.5 are the current operating systems. "Our data processing department has tradition," says Franz Veth, Manager DP. "70% of our applications have been developed in Assembler, the remaining 30% in COBOL. All ERP-applications have been developed in-house. We use VSAM as our data-store. Parts of the data have been binary decrypted as one used to do this, years ago when saving expensive disk space was a habit. "

A tcACCESS mailing caught the attention of BAUHAUS during fall 2000. Franz Veth: "At this time we were looking for a replacement of our file-transfer software. After a redesign and restructure of our network the software we were using didn't meet our expectations any more. We were curious about the tcACCESS concept and asked B.O.S. for more detailed information. When I got them and studied them I couldn't believe what I was reading!"

tcACCESS was installed in December 2000. Peter Jeckel, application developer at BAUHAUS remembers: "We asked B.O.S. for on-site support. A support person spent a day with us and we have been able to completely replace the existing file-transfer procedures with tcACCESS. Using tcACCESS, the procedures not only were simplified, we also experienced a performance boost. "

Production use of tcACCESS started early 2001.

Franz Veth: "We started with tcACCESS by allowing certain end users to select mainframe data. The users needed the data for pricing calculations, article data maintenance etc. They select the data and transfer it to their PCs. This has drastically reduced the involvement of data processing and turned out to be a money saver." The old file-transfer procedures required the development of individual selection programs. These programs are no longer needed with tcACCESS. Peter Jeckel: "The end-user selects the data fields and specifies the selection criteria. tcACCESS performs the data-selection and – conversion, transfers the data and the end-user uses the data inside his EXCEL-application." Approximately 200 transfer-procedures are in production. The required VSAM data is either being selected by tcACCESS using SQL-statement or by native file-transfer definitions.

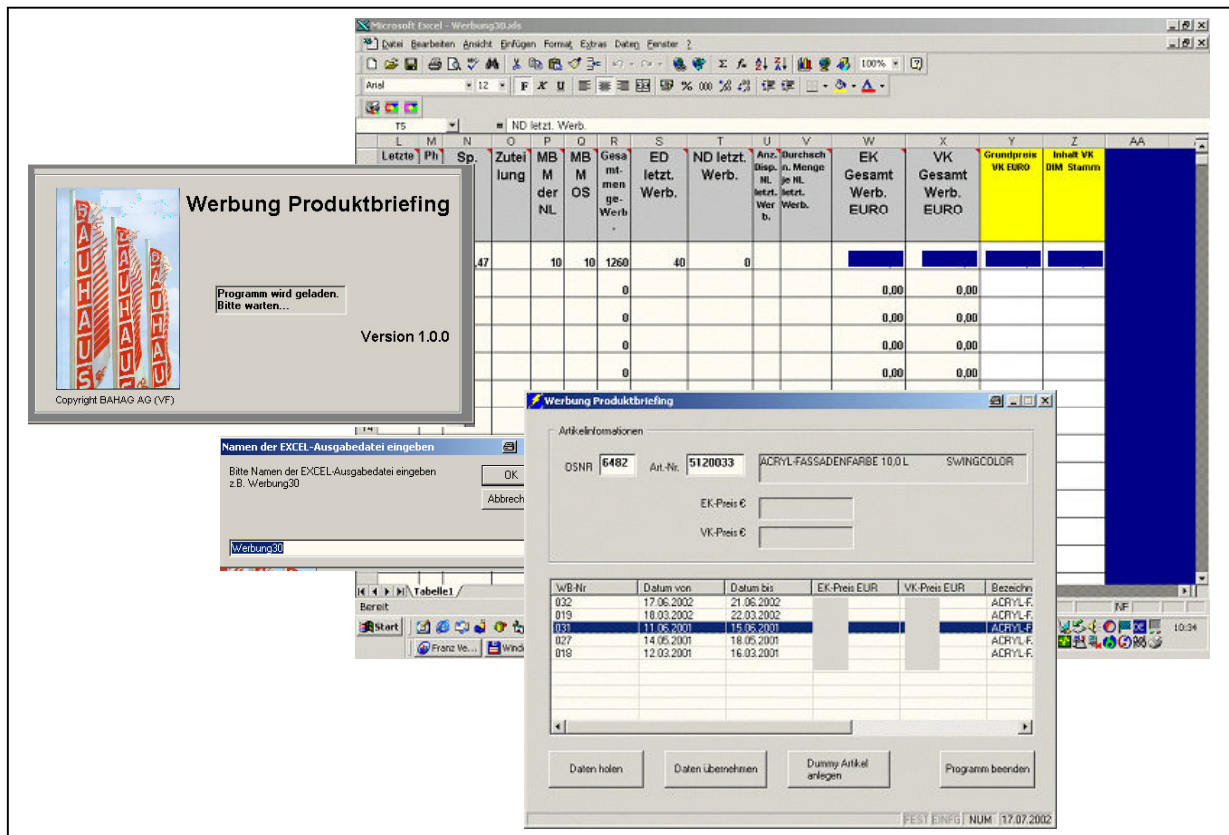
Franz Veth names additional areas of use: "On a regular base we use tcACCESS for urgent ad-hoc reports. Several departments like purchasing, controlling or other business areas request statistics or statistical analysis. We formulate the requests using SQL and are now in a position to always provide to-the-minute information to the user departments. "

In the meantime several Visual Basic applications have been developed, which have become irreplaceable for the marketing department. Franz Veth: "Our marketing strategy is mainly based on brochures and leaflets where we promote certain products. Prior to tcACCESS the required information had to be provided by the data processing department. We used batch procedures to gather the data. Today, the marketing department uses the VB-application and gets the information without any involvement of data processing. A new and interesting application will go into production in a few months. Our purchasing department will then be able to directly initiate so-called "module-orders". All articles that are part of a shelf in our stores are called a module. As of today the data processing department is involved. The purchasing department sends us the module-numbers on forms. These forms will be processed and the orders will be verified. If they are OK they will be processed. This whole procedure is batch oriented. The new VB-application directly accesses the VSAM files using the tcACCESS-ODBC component. The order will be immediately verified and can be corrected by the end-user if a problem has been detected, and the order can be directly placed by the purchasing people." The challenging aspect of this application is the fact, that the VSAM-files are binary decrypted and the application must access the data on a bit-level. Franz Veth: "Performing an access to the bit-level did not cause a problem for tcACCESS. We even use SQL to do this. Because tcACCESS presents the VSAM files like relational tables, the development of this kind of application can be performed in a really short period of time. "

The programmers use tcACCESS. Peter Jeckel: "tcACCESS supports our day-to-day business. We use it for testing purposes and also to maintain our files. The typical "one-time"-programs that we used to develop are now history. We also use tcACCESS to retrieve reports from the POWER-Queue and make them available to our central archiving system. "

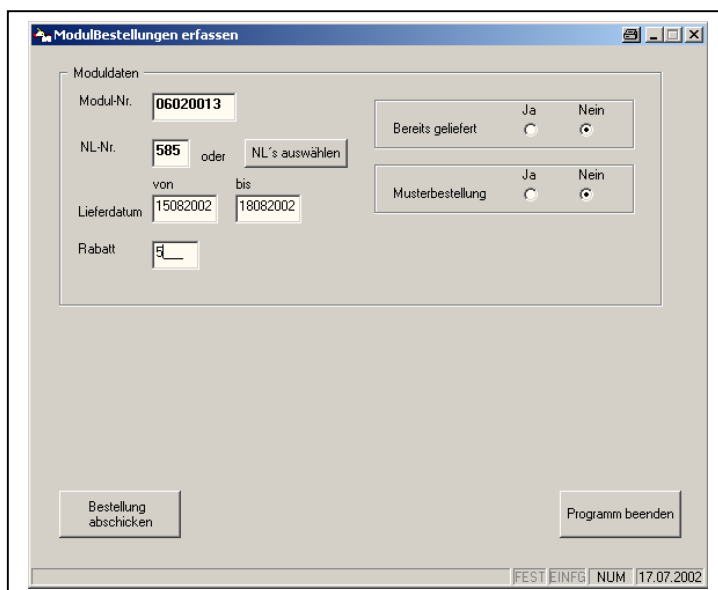
Franz Veth adds one more point which is of importance to him: **"B.O.S. provides the right service. Fast, competent and most important: reliable."**

tcACCESS application examples at BAUHAUS AG.



Marketing product-briefing

The VisualBasic application enables the marketing department to directly extract article- and product-information from the VSAM-files. The mainframe data is accessed using SQL-statements and the tcACCESS ODBC-component. The retrieved data is directly stored into a MS-EXCEL worksheet.



Module-Orders

All articles of a shelf in a store are called modules. The purchasing department can compile the modules using a VB application and directly place the order. Access to the VSAM-files is accomplished with SQL-statements and the tcACCESS ODBC component. Access to the data must be performed on a bit-level.