

Retirement, Rewards, Responsibility

With approximately 300 associates and more than 50 years' experience, Heissmann is one of the leading benefits and compensation consultants in Germany. The company's consulting approach is interdisciplinary and holistic. Heissmann provides clients support in the design through to the implementation of benefit plans and total compensation systems. Also other consulting services are provided such as: labour and tax law advice, accounting for pensions, investment consulting, organisational consulting, administration and software development, insurance brokerage, insurance-based benefit solutions and communication.



Dr. Dr. Heissmann GmbH operates the data centre at the Wiesbaden headquarter. For more than 30 years an IBM mainframe is the heart of the IT. z/VSE 3.1 is the operating system. "Our data processing has tradition and is focussed on optimal performance" says Fritz Fuchs, IT-Manager. "100% of our traditional host applications are written in Assembler. The data is kept in VSAM. All of our production applications have been developed in-house."

Since the beginning of the 1990 decade Dr. Dr. Heissmann GmbH is a user of BOS-Help and BOS-Skip. Early 2000 the first contacts to B.O.S. had been established for tcACCESS. Mr. Fuchs: "At this time we were planning how to bring our current applications and organizational structures into the new Millenium. To do this it was essential for us to use use modern network based technologies to access our existing mainframe-data and -applications. We were excited about the tcACCESS concept."

in 2004 tcACCESS was installed. Fritz Fuchs remembers: "A representative from B.O.S. visited us and presented the numerous functions of the product. We have been impressed by the flexibility of tcACCESS. Even our complex data structures that reflected the typical "Assembler way of thinking" with nested tables did not create any road block for tcACCESS: We could access these files with SQL syntax. "

tcACCESS was purchased in 2004. It was the intention of Dr. Dr. Heissmann to develop a new application portal system for the mathematical account managers. Mr. Fuchs: "The plan was to develop the new application in C# and .NET. We wanted to provide the highest degree of comfort to our people." The first prototype of the application used ODBC to access the VSAM files.. Arthur Fröhlich, application developer at Dr. Dr. Heissmann: "It was extremely important to us to access our VSAM files and applications with short access-paths and little to no overhead. Although ODBC is a WINDWOS industry standard, it has a tendency to be very "talkative" and we didn't want to carry that burden. We consulted B.O.S. and followed the recommendation to develop the new application with the tcACCESS OCX component." Using the OCX component, all functions of tcACCESS can be directly invoked from the application. "The first performan-

ce tests were very convincing and we decided to go ahead with OCX for the new application" says Arthur Fröhlich.

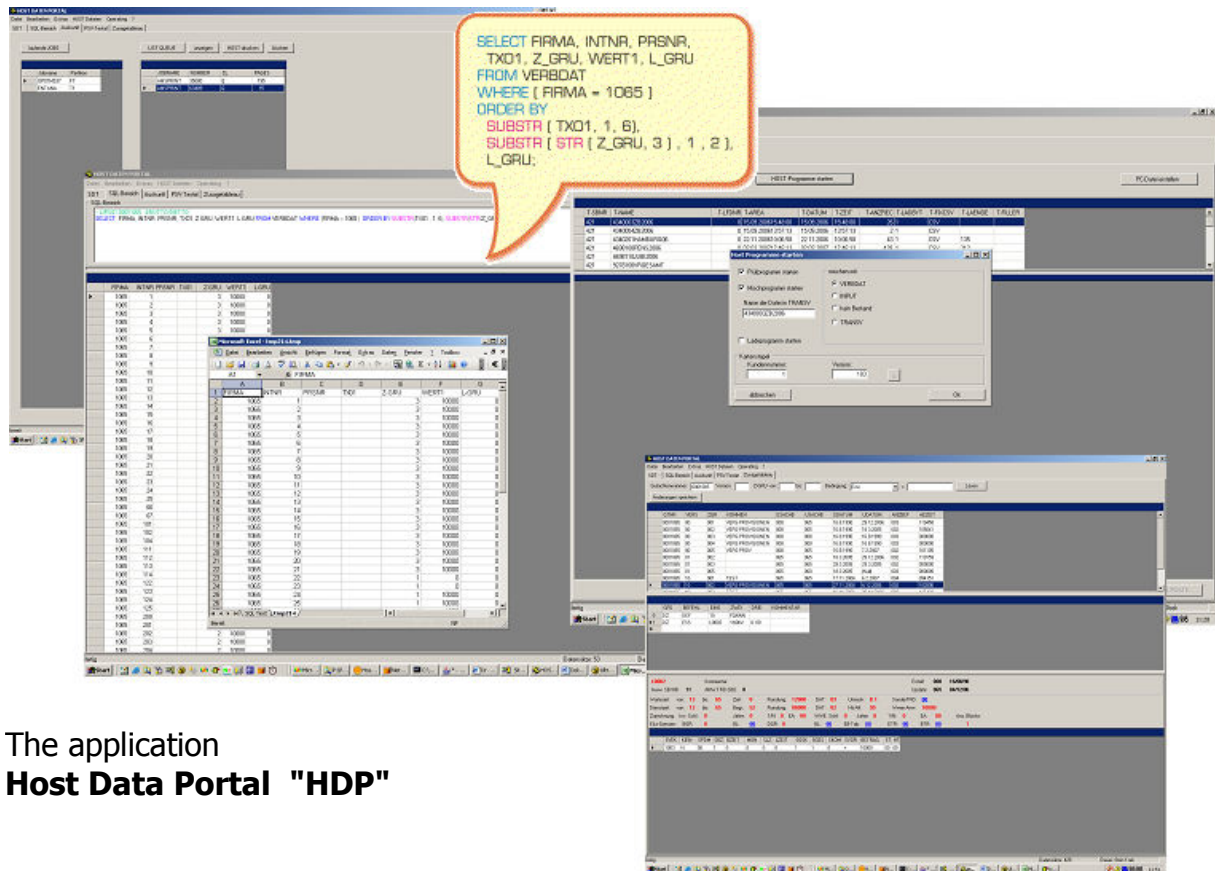
The application "**Host Data Portal" (HDP)** is in production since October 2006. Arthur Fröhlich: "Our account managers like the new application. They can use the graphical application for all aspects of their day-to-day business. The .NET-application allows the submission of jobs that calculate and create surveys. The user can monitor the jobs and view the reports in the POWER-Queue. That is one piece of the application. Another important component of the application is used by our actuaries. They can formulate SQL statements to analyze our data. Approx. 1200 fields can be evaluated. The results of the queries can be loaded into EXCEL spreadsheets. We have 3270 applications where the user can create so-called LIPR definitions (List Personal Records). These records represent some kind of a view to the data record. The HDP application can use these definitions and they are the fundament for tcACCESS SQL queries." No question, that a graphical wizard is part of the application. It assists the user in the selection of tables, fields, conditions and sorting criterias.

Other functions of HDP consist of the monitoring of the "system- independent data transfer". This is a combination of Batch- and Online-applications that act as a variable interface to the customer-systems. Every year the current data declarations are imported from these systems and are used to create the current surveys for the cutoff date. These surveys are written into the POWER-Queue. From there they are processed by tcACCESS and PDF documents are created.

Arthur Fröhlich: "We also use the statistical- and audit-data of tcACCESS very extensively. At any point in time we know the exact number of SQL statements processed and the number of completed data transfers. We also have integrated existing CICS-programs into our C# programs. With the tcACCESS function "Stored Procedures" this is an easy task to do."

Fritz Fuchs: "We are very happy with the product and whenever we need help we can count on the B.O.S. support. B.O.S. is a very reliable partner."

Application examples of Dr. Dr.Heissmann GmbH



The application Host Data Portal "HDP"

has been developed in C-# (.NET). All tcACCESS functions are processed with the tcACCESS OCX-interface.

HDP offers a variety of functions to the user:

- Submission, monitoring, viewing and PDF-export of surveys
- Any SQL-analysis across the 1200 fields of the data record. Statistical functions and optional export of the resultsets to MS-EXCEL are supported
- Usage of the mainframe stored LIPR definitions as fundament for SQL-queries
- Graphical user interface and control of the "system-independent data transfer" (SDT)
- Integration of existing CICS-programs as tcACCESS Stored Procedures
- **HDP** usage reporting from the tcACCESS statistical data